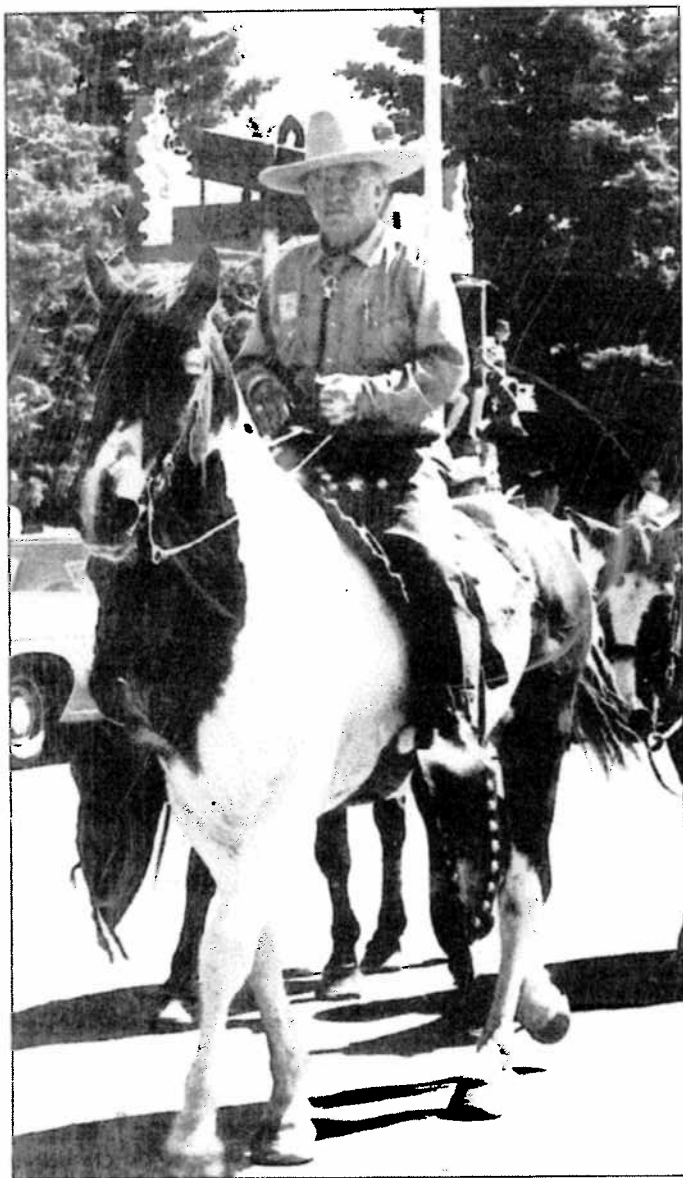


Elmer's saddle

Elmer used this saddle both for work on an elk hunt as well as in a parade. Son Ted is seen riding on it when ten years old leading a pack string out of the back country.

As seen in Gun Notes Vol I

Elmer Keith



A true outdoorsman, Keith was practically born in the saddle. His opinions on saddles were just as strong as his opinions on firearms.

.225 WINCHESTER MODEL 70 BULL GUN

Joe Kinsella and I have been testing the new Winchester Model 70 bull gun in .225 Winchester caliber. The cartridge case is rimmed and reminiscent of the Zipper cartridge, but with larger capacity. It duplicates the ballistics of the fine .224 Weatherby Magnum. A 50-grain bullet goes around 3,800 fps, and a 55-grain bullet around 3,650. Only 55-grain loads were sent with the rifle in plain white boxes. They are wonderfully accurate. This would also be an excellent cartridge in all single-shot varmint rifles for shooters wanting a cartridge of this velocity and superb accuracy. They

fps velocity. This we look forward to testing later, as should be a good wind-bucker and flatter over longer ranges than the two lighter bullets. The rifling is 1:14 with a turn in 14 inches, and a 60-grain bullet would probably be close to the cartridge's limit for twist.

Of all the .22 varmint cartridges, this .225 Winchester, the .224 Weatherby Magnum, and the famous .222 Remingtons have given us the most consistent accuracy of all. The powder capacity of the .225 Winchester is a bit greater than that of the .224 Weatherby, and pressures seem lower than the Weatherby, but both shoot wonderfully well.

This 55-grain load allows sighting the rifle 20 inches high at 100 yards to give about a 2 1/2-inch drop at 150 to 175 yards and some two inches of drop at 300 yards. It is flat as a stretched string to 300 yards. As near as I can tell, this new .225 Winchester and the .224 Weatherby Magnum are about on a par both in accuracy and for trajectory. Both are good for 1/2-inch or less groups at 100 yards with perfect hold. Both show some wind drift even at 100 yards with 55-grain bullets. Both like 4895 or 4064 best of all powders tried. Both cartridges may be best served with 60-grain bullets in windy country.

The rifle has a 24-inch straight-taper bull barrel equipped with scope blocks for the Lyman Super Targetspot or other target scopes. It is also tapped for a Redfield front and rear sight. It has the new Model 70 action and stock. Bedding of this particular rifle was poor. It is supposed to be full-floating, but the stock had warped until it bore hard along the right side of the barrel channel and left a huge gap between the receiver and wood on the left side. Contact of the receiver seemed to be just at the recoil lug. Even in this condition, it shot wonderfully well. However, when I relieved the forestock on the right side, accuracy went to pot. Examination showed very little contact of the receiver with wood, and this only at the recoil lug. Next I packed the receiver portion of the stock with modeling clay and seated all guard screws up tight and it went right back to work and produced groups under a half-inch at 100 yards. Joe fired one group with four of the five in one hole. The answer will be a new stock or glass bedding. I believe this rifle, if bedded carefully with a high-grade custom stock properly bedded, with full contact along receiver and barrel at some up-push at tip of forestock, will be a tack-true job. Glass bedding may also accomplish this result.

The .225 Winchester is also offered with a normal weight barrel of 22 inches. The bull-barrel job weighs 9 3/4 pounds while the standard rifle with 22-inch barrel weighs just seven pounds. Price of the bull gun

Ted sitting on Elmer's silver mounted saddle -
Pg 394 - Elmer Keith's Big Game Hunting 1948



The author's son Teddy heading the pack string which is carrying the a 1946 elk killed with a .400 Watson double rifle



Courtesy Union Pacific

A big game hunter's camp on the Middle Fork of the Salmon River

Elmer's saddle p. 365 - G + A for Hunting Big Game

Keith's rifle scabbard position gave
maximum protection to gun while on the trail.

PACK OUTFITS AND TRAIL



