

49548-8



*Springfield Mass*

February 21, 2000

39

We received your letter of recent date in reference to one of our early revolvers. The revolver you inquired about is a .38 Winchester Double Action. This model was introduced in 1900 and sold until 1910 with a total production of 276.

The .38 Winchester Double Action was designed to fire the .38 Winchester cartridge which is today called the 38/40 cartridge. It was manufactured in both blue and nickel having barrel lengths of four, five, six and six and a half inches.

At the time this revolver was originally sold, the retail price was \$14.50.

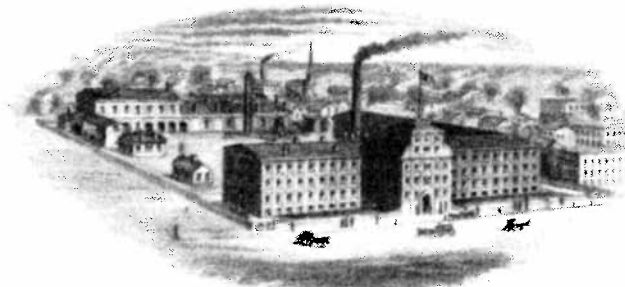
We have researched your Smith & Wesson .38 Winchester Double Action, caliber .38 Winchester (.38/40) in company records which indicate that your handgun, with serial number 2, was shipped from our factory on August 22, 1901, and delivered to Wm. Read & Sons, Boston, MA. The records indicate that this revolver was shipped with a 6.5 inch barrel, blue finish, and checkered black hard rubber grips.

We trust that the information furnished will be helpful and of interest.

Sincerely,

SMITH & WESSON

*Roy G. Jinks*  
Roy G. Jinks  
Historian



SMITH & WESSON