



Springfield Mass

October 22, 2008

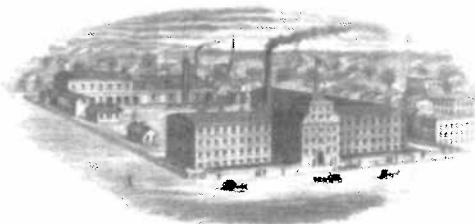
We received your letter of recent date in reference to a Smith & Wesson handgun.

On August 13, 1930 the factory issued an engineering order to build the first 500 .22 caliber revolver that were called the K-22 beginning a long line of the K frame .22 caliber target revolvers. When this model was introduced in 1931 the factory named it the K-22 Outdoorsman, but today it is referred to by collectors as the K-22 First Model. The early production revolvers featured a Call gold bead front sight. This was changed to a stainless steel Call bead front sight after September 16, 1931.

The K-22 Outdoorsman became an immediate success with the target shooters and sportsman. After 1936 it became available with the new Smith & Wesson Magna grips which extended over the frame at the top of the grip. The last option that became available was the Smith & Wesson hump back hammer which was designed to allow for fact cocking of the revolver in rapid fire. On December 28, 1939 the engineering change was issued to stop production of the K-22 Outdoorsman in favor of a improved model. The total production of the K-22 First Model was 17,117 units.

A Second Model, called the K-22 Masterpiece, was introduced in 1940 with a shorter action and a trigger over travel stop, and micrometer click type adjustable sight. The catalog states this model was available with either a Call gold bead or Call brilliant bead front sight (stainless steel bead), and checkered walnut Magna stocks. Both of these early K-22 Outdoorsman models had a round non-ribbed barrel. The hump back hammer was also available on this model.

A handwritten signature in dark ink, appearing to be 'R. J. ...'.





K-22 First and Second Model
Page 2

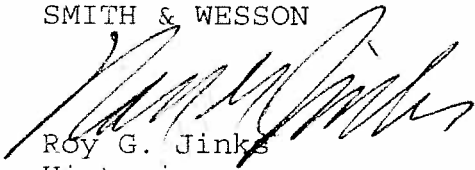
At the beginning of wartime production in 1941, all Target models were temporarily discontinued as the factory went into complete production of handguns to meet the needs of our allied forces. The K-22 Masterpiece or Second Model was only in production for one year. In that time span the factory produced 1067 units the serial numbers are scatter between number 682420 and 696952 of the .38 Military & Police serial number series.

We have researched your Smith & Wesson K-22 Masterpiece or K-22 Second Model, caliber .22 Long Rifle, in company records which indicate that your handgun, with serial number 686500, was shipped from our factory on May 15, 1940, and delivered to Stoeger Arms Co., New York City, NY. The records indicate that this firearm was shipped with a 6 inch barrel, blue finish, and checkered walnut Magna grips. This shipment contain only a single unit of this model and it was plain with out engraving. It was billed at \$23.82.

We trust that the information furnished will be helpful and of interest.

Sincerely,

SMITH & WESSON



Roy G. Jinks
Historian

SMITH & WESSON K-22 MASTER PIECE (SECOND MODEL)
SERIAL NO. 666500 (4 OF 1067¹⁹⁴⁰ MADE) FIRST WITH
SHORT ACTION - MICROMETER CLICK SIGHT

ENCLOSED

1. FACTORY LETTER 10/22/08
 2. EXPLANATION OF ENGRAVING ON BARREL
 3. EXPLANATION OF LETTERS S.W.C.P.L. ON PLASTIC CASE
- 2011 "BLUE BOOK OF GUN VALUES" LISTS THIS MODEL AT \$4650
IN 98% CONDITION.

America the Beautiful

{ S.W.C.P.L. (MARKED ON PLASTIC CASE)
SOUTHWEST CONN. PISTOL LEAGUE

ENGRAVING ON BARREL

{ "PRESENTED TO T. J. E. KEELER" / TIMOTHY J. E. KEELER
"INITIAL PRESIDENT S. S. F. D." / 1938-39

"S. S. F. D." IS SOUTH SALEM FIRE DEPARTMENT
SOUTH SALEM IS IN WESTCHESTER COUNTY, NEW YORK
NEAR CONN. LINE.

